

# Tomato Leaf Diseases Classification using Deep Learning

Mohammed F. El-Habibi, Samy S. Abu-Naser

Department of Information Technology, Faculty of Engineering and Information Technology  
Al-Azhar University - Gaza, Palestine

**Abstract:** Tomatoes are among the most popular vegetables in the world due to their frequent use in many dishes, which fall into many varieties in common and traditional foods, and due to their rich ingredients such as vitamins and minerals, so they are frequently used on a daily basis. When we focus our attention on this vegetable, we must also focus and take into consideration the diseases that affect this vegetable, a deep learning model that classifies tomato diseases has been proposed. The aim of this paper is to diagnose tomato diseases based on a dataset containing 11000 picture and 11 classes. The model gave the final accuracy test with Accuracy (99.87%), F1-score (99.87%), Recall (99.87%), and Precision (99.88%) in an estimated time 1.36 second, as with these results it proved its effectiveness and good ability in the classification of the testing data.

**Keyword:** Tomato, Deep Learning, Classification, EfficientNetV2B0, CNN.

## 1. Introduction

Tomato is a popular fruit that is widely used in cooking. They are native to South America and are members of the nightshade family. Tomatoes are usually round or oblong in shape and red in colour, although there are other varieties coloured yellow and green. The fruit is juicy and has a sweet and acidic flavour [1]. Tomatoes are considered one of the good sources of minerals and vitamins, including potassium and vitamin C. It is often used in salads, sandwiches, sauces, and other dishes and is a key ingredient in many different cuisines around the world. In addition to eating fresh tomatoes, tomatoes can also be canned, dried, or made into juice or paste. As for the diseases that affect this fruit, the common diseases are many and varied.

To prevent tomato diseases, it is important to grow disease-resistant varieties, rotate crops, and practice good hygiene. By removing and destroying infected plants. [2], common tomato diseases are "bacterial spot, early light, late light, leaf, downy mildew, two-spotted spider, target, blight, tomato, virus, tomato, virus, health virus [3], To name a few. They have diseases such as powdery mildew." Early blight: It is caused by a fungus called *Alternaria solani* and is characterized by circular dark spots on the leaves and stems of the plant. Late blight: It is caused by a fungus called *Phytophthora infestans* and is characterized by large, dark, water-soaked spots on the leaves, stems and fruits of the plant. Tomato mosaic virus: caused by a virus and characterized by mottled or deformed leaves and stunted growth. Fusarium wilt: This is caused by a fungus called *Fusarium oxysporum* and is characterized by yellowing of the lower leaves and wilting of the plant. Verticillium wilt: This is caused by a fungus called *Verticillium dahliae* and is characterized by yellowing leaves and wilting of the plant [3].

When it comes to technology in general and deep learning in particular in disease diagnosis, we will turn to neural network technology, which is a subset of Machine Learning (ML) [4]-[10], and it is at the basis of deep Learning Algorithms (DL)

[11]-[14] that consist of layers of nodes, which contain one input layer and one or more hidden layers and one output layer. In a network, nodes are connected to one another and have assigned weights and thresholds [15]-[16]. If the output from a node exceeds its specified threshold, the node is triggered and sends information to the subsequent layer. However, if the output remains below the threshold, no information will be transmitted to the next layer [17]-[19].

We find that the classification of these diseases based on the deep learning model, specifically Convolutional Neural Networks (CNN), is much easier than human forces, while saving time, effort, and even accuracy in classification, especially since our model classifies eleven diseases [20]-[23]. It is common for the tomato fruit to give an accuracy test of up to 99.87% with an almost non-existent error rate, so we tried as much as possible to bring a modern, comprehensive and accurate data set in order to provide good information and reliable results, so we find that deep learning is a strong future trend that can be relied upon strongly, considering the machine learning approach that emulates the human capability of learning through examples is called deep learning [24]-[29]. This technology powers self-driving cars to identify traffic signs such as stop signs, and to differentiate between a pedestrian and a lamppost [30]. Which is exactly what we mean in diagnosing tomato diseases. To explain more about our model, a dataset containing approximately 11,000 images in 11 categories, with an accuracy of 99.87%.

## 2. RELATED WORK

There are many studies that were used in the classification of tomato leaf diseases that employed a number of deep learning and machine learning methods. Different datasets were used for the problem of classification. Some studies used mainly the accuracy for the evaluation metrics and others utilized different metrics like F1-score, Precision, and Recall. The accuracies attained the previous studies vary from 83.06% to 99.64%.

In the study [1] they used MobileNet, VGG16, ResNet101 and ResNet50 for the classification of tomato leaf disease. The dataset they used was collected from the internet images and the best accuracy achieved was 99.64%.

In the study [2], they used Deep Neural Network (DNN) to classify the tomato leaf disease using the plant village dataset. The accuracy they attained was 86.00%.

In the study [3] they employed ResNet50 for the classification of the tomato leaf diseases using plant village dataset and the accuracy attained was 86%.

In the study [31], the authors employed three CNN models: AlexNet, SqueezeNet, and InceptionV3. The dataset was Plant Village and the best accuracy achieved was AlexNet (93.40%), SqueezeNet (90.76%), and InceptionV3 (90.43%).

Most of the previous studies like [1]-[3], [31]-[37] used Convolutional Neural Networks (CNN) methods and study [38] used machine learning techniques.

A complete summary of the previous studies in terms of Year of publication, methods used, performance metrics, dataset, and accuracy attained (Table 1).

Table 1. Summarizes the previous studies in term of method, performance metric, dataset and accuracy used

Reference	Year	Method used	Performance metrics	Dataset	Accuracy (%)
[1]	2019	ResNet101, VGG16, and MobileNet, ResNet50	Average precision	Internet images	99.64%
[2]	2021	DNN	Accuracy and loss rate	Plant Village	86.00%
[3]	2020	ResNet50	Accuracy	Plant Village	97.00%
[31]	2020	Inception V3, SqueezeNet, AlexNet,	Accuracy, recall, F1-score	Plant Village	InceptionV3: 90.43%, SqueezeNet: 90.76%, AlexNet: 93.40%
[32]	2020	ResNet and U-Net	Accuracy	Plant Village	94.00%
[33]	2020	Inception V3	F1-score, recall, precision	Private	InceptionV3: 99.60%
[34]	2020	CNN	F1-score, recall, precision	Plant Village	91.20%
[35]	2020	CNN	F1-score, recall, precision	Private	98.46%
[36]	2017	R-CNN	F1-score, recall, precision	Private	83.06%
[37]	2020	Extreme Learning Machine (ELM)	Accuracy, AUC	Tomato powdery mildew dataset	89.19%
[38]	2020	LR, SVM	Accuracy, F1- score, AUC	Tomato powdery mildew dataset	92.73%

### 3. Study Objective

The objective of classifying tomato leaf diseases is to accurately identify and diagnose the specific disease affecting the plant. This helps in:

- Selecting appropriate treatment and control measures: Accurate diagnosis of a disease is essential in order to choose the most effective control and treatment measures.

- Improving crop yield and quality: Proper diagnosis and control of diseases can help in improving crop yield and quality.
- Preventing spread of diseases: Classifying tomato leaf diseases can help to prevent the spread of diseases from infected to healthy plants.
- Increasing farmer's profitability: Effective disease management through accurate diagnosis and control can help increase farmer's profitability.

- Improving understanding of plant pathology: Classification of tomato leaf diseases can also contribute to a better understanding of plant pathology, which can be useful in developing more effective control measures in the future.

Overall, the classification of tomato leaf diseases plays an important role in the sustainable production of tomato crops and helps in protecting the interests of farmers, consumers and the environment.

#### 4. Methodology

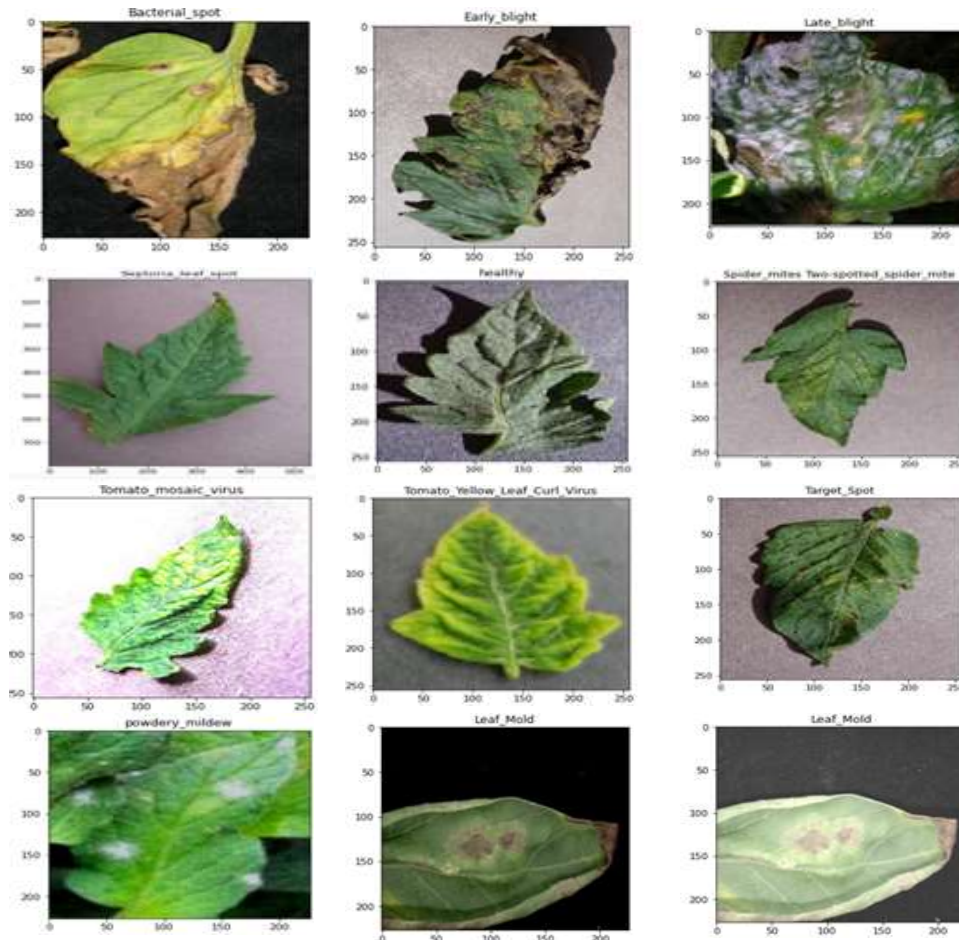


Figure 1. Samples of the dataset

#### 4.2 Proposed Model

The proposed model is the fine-tuned model EfficientNetV2B0. EfficientNetV2B0 is a type of deep learning model for image classification. It is a variant of the EfficientNet architecture, which was introduced by Google in 2019. The "V2" in the name indicates that it is a version 2 of the original EfficientNet architecture, while the "B0" indicates that it is the baseline version of the model [40].

#### 4.1 Dataset

A balanced data set was collected from Kaggle [40] containing approximately 11,000 images divided between training, testing and validation sets, in 11 classes: Target Spot, Late blight, Leaf Mold, Spider mites Two-spotted spider mite, leaf spot, Septoria, Tomato mosaic virus, Tomato Yellow Leaf Curl Virus, powdery mildew, Early blight, healthy and Bacterial spot. Figure 1 illustrates the different classes of the tomato leaf diseases.

The EfficientNetV2B0 model is designed to be both accurate and efficient, making it suitable for deployment in real-world applications. The model uses a combination of depthwise separable convolutions, squeeze-and-excitation (SE) blocks, and a novel scaling method to achieve improved accuracy and efficiency compared to other architectures.

EfficientNetV2B0 has been trained on a large image dataset and can be fine-tuned for specific tasks, such as image classification, object detection, and semantic segmentation. The model has shown excellent performance on a variety of

benchmark datasets and is widely used in a range of computer vision tasks.

Overall, the EfficientNetV2B0 model is a powerful tool for image classification and is well-suited for deployment in real-world applications due to its combination of accuracy and efficiency.

### 4.3 Proposed model Architecture

EfficientNetV2B0 consists of several components that work together to perform image classification tasks. The key components of EfficientNetV2B0 are [40]:

1. Convolutional Layers: These layers perform feature extraction by applying filters to the input image to learn its local features.
2. Pooling Layers: These layers down-sample the feature maps produced by the convolutional layers to reduce the spatial dimensions while maintaining the most important information.
3. Squeeze-and-Excitation (SE) Blocks: SE blocks are used to increase the network's ability to model complex relationships between the channels of the feature maps.

4. Depthwise Separable Convolutions: The model uses depthwise separable convolutions, which can reduce the number of parameters and computational cost compared to traditional convolutions.
5. Residual Connections: The model uses residual connections, which can help to alleviate the vanishing gradients problem and improve the model's ability to learn.
6. Skip Connections: The model uses skip connections, which can help to improve the model's accuracy and reduce the risk of overfitting.
7. Fully Connected Layers: The model includes one or more fully connected layers at the end of the network, which perform the final classification tasks based on the features extracted by the convolutional layers.

These components work together to learn and extract features from the input image and make predictions about the class of the image. The specific design and configuration of these components in EfficientNetV2B0 have been optimized to achieve high accuracy and computational efficiency. The architecture of the EfficientNetV2B0 is represented in the table 2 and illustrated in Figure 2 [40].

Table 2. EfficientNetV2B0 Deign Summary

Step	Operator	Stride	Channels Num.	Layers Num.
0	Conv3x3	2	24	1
1	Fused-MB-Conv_1; k3x3	1	24	2
2	Fused-MB-Conv_4; k3x3	2	48	4
3	Fused-MB-Conv_4; k3x3	2	64	4
4	MB-Conv_4, k3x3; SE0.25	2	128	6
5	MB-Conv_6, k3x3; SE0.25	1	160	9
6	MB-Conv_6, k3x3; SE0.25	2	256	15
7	Conv1x1 + Pooling + FC	-	1280	1

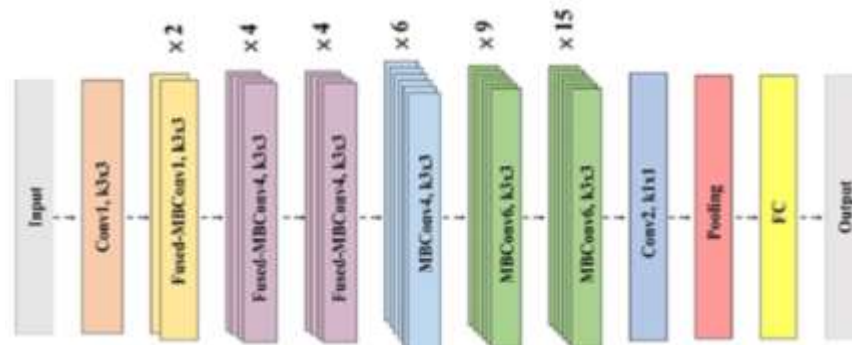


Figure 2. Architecture of EfficientNetV2B0

7.1 Evaluation Metrics

For the assessment of the suggested EfficientNetV2B0 model using the tomato leaf diseases dataset, we used Accuracy as

$$\text{Precision} = \frac{TP}{TP + FP} \tag{1}$$

$$\text{Recall} = \frac{TP}{TP + FN} \tag{2}$$

$$F1 - score = 2 * \frac{\text{Precision} \times \text{Recall}}{\text{Precision} + \text{Recall}} \tag{3}$$

$$\text{Accuracy} = \frac{TN + TP}{TN + FP + TP + FN} \tag{4}$$

Where: TP =True Positive, FP=False Positive, TN=True Negative, FN=False Negative

in Eq. 4, Precision (Eq. 1), Recall (Eq. 2) and F1-Score (Eq. 3) [30].

5. Results and Discussion

We have trained the proposed model using the training and validation data for 60 epochs. The results of the training accuracy was 99.88%, Training

Loss: 0.0032 the Validating Accuracy: 0.9661%, Validating Loss: 0.1384 after 60 Epochs. As shown in Figure 3. The history of the training and validation of the proposed model for the last 20 epochs are shown in Figure 4 and Figure 5.

Training Accuracy: 0.9988, Training Loss: 0.0032  
 Validating Accuracy: 0.9661, Validating Loss: 0.1384

Figure 3. Accuracies and losses of the training and validation of the proposed model



Figure 4. History of training and validation accuracy

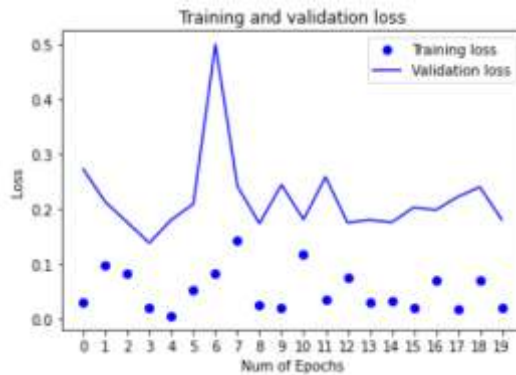


Figure 5. History of training and validation Loss

The accuracy and loss of testing the proposed model came out: testing accuracy (99.87%) and testing loss (0.0039) as in Figure 6.

```
50/50 [=====] - 1s 15ms/step - loss: 0.0039 - accuracy: 0.9987
Testing final accuracy: 0.9987, Testing Final loss: 0.0039
Time elapsed in seconds: 1.3644986152648926
```

Figure 6. Accuracy and loss of the testing of the proposed model



The classification report of the proposed model is shown in Figure 7. From the Figure we can see that the proposed model achieved: Accuracy (99.87%), F1-score (99.87%), Recall (99.87%), and Precision (99.88%).

Figure 8 show the ROC curve of each class in the tomato leaf diseases of the proposed model; while Figure 9 show the confusion matrix of the proposed model. From Figure 8 and Figure 9, we can see that the proposed model learned the training data and thus it can generalize and not memorize the images.

	precision	recall	f1-score	support
Bacterial_spot	1.0000	1.0000	1.0000	131
Early_blight	1.0000	1.0000	1.0000	128
Late_blight	1.0000	1.0000	1.0000	152
Leaf_Mold	1.0000	0.9858	0.9929	141
Septoria_leaf_spot	0.9868	1.0000	0.9933	149
Spider_mites Two-spotted_spider_mite	1.0000	1.0000	1.0000	145
Tomato_Yellow_Leaf_Curl_Virus	1.0000	1.0000	1.0000	161
Tomato_mosaic_virus	1.0000	1.0000	1.0000	150
healthy	1.0000	1.0000	1.0000	153
powdery_mildew	1.0000	1.0000	1.0000	148
Target_Spot	1.0000	1.0000	1.0000	132
accuracy			0.9987	1590
macro avg	0.9988	0.9987	0.9987	1590
weighted avg	0.9988	0.9987	0.9987	1590

Figure 7. Classification Report of the proposed model

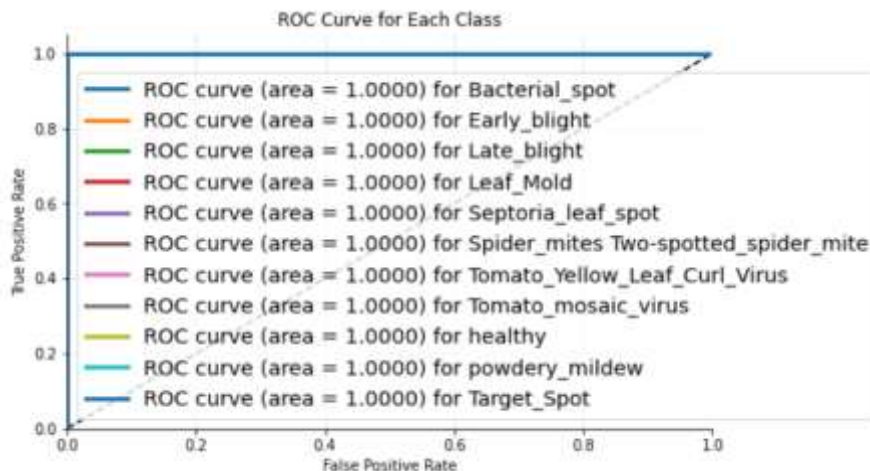


Figure 8. ROC curve for each class of the dataset

131	0	0	0	0	0	0	0	0	0	0	0	0
0	128	0	0	0	0	0	0	0	0	0	0	0
0	0	152	0	0	0	0	0	0	0	0	0	0
0	0	0	139	2	0	0	0	0	0	0	0	0
0	0	0	0	149	0	0	0	0	0	0	0	0
0	0	0	0	0	145	0	0	0	0	0	0	0
0	0	0	0	0	0	161	0	0	0	0	0	0
0	0	0	0	0	0	0	150	0	0	0	0	0
0	0	0	0	0	0	0	0	153	0	0	0	0
0	0	0	0	0	0	0	0	0	148	0	0	0
0	0	0	0	0	0	0	0	0	0	132	0	0

Figure 9. Confusion Matrix of the proposed model

Table 2 show a comparison between the previous studies and the current study. From Table 2, we can conclude that our proposed model EfficientNetV2B0 outperformed the models in the previous studies where the best accuracy in the

previous studies was 99.64% while purposed model achieved Accuracy (99.87%), F1-score (99.87%), Recall (99.87%), and Precision (99.88%).

Table 1. Summarizes the previous studies in term of method, performance metric, dataset and accuracy used

Reference	Year	Method used	Performance metrics	Dataset	Accuracy (%)
[1]	2019	ResNet101, VGG16, and MobileNet, ResNet50	Average precision	Internet images	99.64%
[2]	2021	DNN	Accuracy and loss rate	Plant Village	86.00%
[3]	2020	ResNet50	Accuracy	Plant Village	97.00%
[31]	2020	Inception V3, SqueezeNet, AlexNet,	Accuracy, recall, F1-score	Plant Village	InceptionV3: 90.43%, SqueezeNet: 90.76%, AlexNet: 93.40%
[32]	2020	ResNet and U-Net	Accuracy	Plant Village	94.00%
[33]	2020	Inception V3	F1-score, recall, precision	Private	InceptionV3: 99.60%
[34]	2020	CNN	F1-score, recall, precision	Plant Village	91.20%
[35]	2020	CNN	F1-score, recall, precision	Private	98.46%
[36]	2017	R-CNN	F1-score, recall, precision	Private	83.06%
[37]	2020	Extreme Learning Machine (ELM)	Accuracy, AUC	Tomato powdery mildew dataset	89.19%
[38]	2020	LR, SVM	Accuracy, F1- score, AUC	Tomato powdery mildew dataset	92.73%
<b>Current Study</b>	<b>2023</b>	<b>EfficientNetV2B0</b>	<b>F1-score, recall, precision</b>	<b>Kaggle Tomato leaf Diseases Dataset</b>	<b>99.87%</b>

diseases related not only to tomato leaves, but also have proven their worth in classifying diseases in general.

## 6. CONCLUSION

A deep learning model that classifies tomato diseases has been completed. The aim of this paper was to diagnose tomato diseases based on a dataset containing 11,000 images and 11 categories of common tomato diseases, through deep learning and EfficientNetV2B0 architecture and to discuss relevant design options and implementation aspects. The model gave a final test Accuracy (99.87%), F1-score (99.87%), Recall (99.87%), and Precision (99.88%) in an estimated time of 1.36 seconds, as it proved with these results its effectiveness and good ability in the classification test. Convolutional neural networks have proven their quality in classifying

## References

1. Abu Ghali, M. J., et al. (2018). "An Intelligent Tutoring System for Teaching English Grammar." *International Journal of Academic Engineering Research (IJAE)* 2(2): 1-6.
2. Abu Nada, A. M., et al. (2020). "Age and Gender Prediction and Validation Through Single User Images Using CNN." *International Journal of Academic Engineering Research (IJAE)* 4(8): 21-24.
3. Abu Nada, A. M., et al. (2020). "Arabic Text Summarization Using AraBERT Model Using Extractive Text Summarization Approach." *International Journal of Academic Information Systems Research (IJAISR)* 4(8): 6-9.
4. Abu Naser, S. (2008). "An Agent Based Intelligent Tutoring System For Parameter Passing In Java Programming." *Journal of Theoretical & Applied Information Technology* 4(7).
5. Abu Naser, S. S. (2001). "A comparative study between animated intelligent tutoring systems AITS and video-based intelligent tutoring systems VITS." *Al-Aqsa Univ. J* 5(1): 72-96.
6. Abu Naser, S. S. (2008). "Developing visualization tool for teaching AI searching algorithms." *Information Technology Journal, SciAlert* 7(2): 350-355.
7. Abu Naser, S. S. (2012). "A Qualitative Study of LP-ITS: Linear Programming Intelligent Tutoring System." *International Journal of Computer Science & Information Technology* 4(1): 209.
8. Abu Naser, S. S. and M. J. Al Shobaki (2016). "Enhancing the use of Decision Support Systems for Re-engineering of Operations and Business-Applied Study on the Palestinian Universities." *Journal of Multidisciplinary Engineering Science Studies (JMSS)* 2(5): 505-512.
9. Abu Naser, S. S. and M. J. Al Shobaki (2016). "The Impact of Management Requirements and Operations of Computerized Management Information Systems to Improve Performance (Practical Study on the employees of the company of Gaza Electricity Distribution). First Scientific Conference for Community Development.
10. Abu Naser, S. S. and M. J. Al Shobaki (2017). "Organizational Excellence and the Extent of Its Clarity in the Palestinian Universities from the Perspective of Academic Staff." *International Journal of Information Technology and Electrical Engineering* 6(2): 47-59.
11. Abu Naser, S. S. and M. J. Al Shobaki (2017). "The Impact of Senior Management Support in the Success of the e-DMS." *International Journal of Engineering and Information Systems (IJEIS)* 1(4): 47-63.
12. Abu Naser, S. S. and M. Shobaki (2016). "Requirements of using Decision Support Systems as an Entry Point for Operations of Re-engineering in the Universities (Applied study on the Palestinian universities in Gaza Strip)." *World Wide Journal of Multidisciplinary Research and Development* 2(4): 32-40.
13. Abu Naser, S. S., et al. (2016). "KM Factor Affecting High Performance in Intermediate Colleges and its Impact on High Performance-Comparative Study." *Computational Research Progress in Applied Science & Engineering* 2(4): 158-167.
14. Abu Naser, S. S., et al. (2017). "Impact of Communication and Information on the Internal Control Environment in Palestinian Universities." *International Journal of Hybrid Information Technology* 10(11): 41-60.
15. Abu Naser, S. S., et al. (2017). "The Reality of Electronic Human Resources Management in Palestinian Universities from the Perspective of the Staff in IT Centers." *International Journal of Engineering and Information Systems (IJEIS)* 1(2): 74-96.
16. Abu Naser, S. S., et al. (2017). "Trends of Palestinian Higher Educational Institutions in Gaza Strip as Learning Organizations." *International Journal of Digital Publication Technology* 1(1): 1-42.
17. Abu Naser, S., et al. (2011). "Human Computer Interaction Design of the LP-ITS: Linear Programming Intelligent Tutoring Systems." *International Journal of Artificial Intelligence & Applications (IJAA)* 2(3): 60-70.
18. AbuEloun, N. N. and S. S. Abu Naser (2017). "Mathematics intelligent tutoring system." *International Journal of Advanced Scientific Research* 2(1): 11-16.
19. Abu-Naser, S. S. (2008). "JEE-Tutor: An Intelligent Tutoring System for Java Expression Evaluation." *Information Technology Journal* 7(5): 528-532.
20. Abu-Naser, S. S. (2015). "SIS Object-Simpler Level 5 Object Expert System Language." *International Journal of Soft Computing, Mathematics and Control (IJSCMC)* 4(4): 25-37.
21. Abu-Naser, S. S. and I. A. El Hadad (2016). "An Expert System for General Problems in Infants." *WJMRD* 2(5): 20-26.
22. Abu-Naser, S. S. and I. S. Zaqout (2016). "Knowledge-based systems that determine the appropriate students major: In the faculty of engineering and information technology." *World Wide Journal of Multidisciplinary Research and Development* 2(10): 26-34.
23. Abu-Naser, S. S. and M. A. Al-Nakhal (2016). "A Rule Based System for Ear Problem Diagnosis and Treatment." *World Wide Journal of Multidisciplinary Research and Development* 2(4): 25-31.
24. Abu-Naser, S. S. and M. H. Al-Bayed (2016). "Detecting Health Problems Related to Addiction of Video Game Playing Using an Expert System." *World Wide Journal of Multidisciplinary Research and Development* 2(9): 7-12.
25. Abu-Naser, S. S. and M. J. Al Shobaki (2016). "Computerized Management Information Systems Resources and their Relationship to the Development of Performance in the Electricity Distribution Company in Gaza." *EUROPEAN ACADEMIC RESEARCH* 6(8): 6969-7002.
26. Abu-Naser, S. S. and M. M. Hilles (2016). "An expert system for shoulder problems using CLIPS." *World Wide Journal of Multidisciplinary Research and Development* 2(5): 1-8.
27. Abu-Naser, S. S., et al. (2011). "An intelligent tutoring system for learning java objects." *International Journal of Artificial Intelligence & Applications (IJAA)* 2(2): 86-77.
28. Abu-Naser, S. S., et al. (2016). "Promoting Knowledge Management Components in the Palestinian Higher Education Institutions-A Comparative Study." *International Letters of Social and Humanistic Sciences* 73: 42-53.
29. Abu-Naser, B. S. and S. S. Abu Naser (2018). "Rule-Based System for Watermelon Diseases and Treatment." *International Journal of Academic Information Systems Research (IJAISR)* 2(7): 1-7.
30. Abunasser, B. S., et al. (2022). "Breast Cancer Detection and Classification using Deep Learning Xception Algorithm." *International Journal of Advanced Computer Science and Applications* 13(7).
31. Abu-Saqer, M. M. and S. S. Abu-Naser (2019). "Knowledge Based System for Uveitis Disease Diagnosis." *International Journal of Academic Information Systems Research (IJAISR)* 3(5): 18-25.
32. Afana, M., et al. (2018). "Artificial Neural Network for Forecasting Car Mileage per Gallon in the City." *International Journal of Advanced Science and Technology* 12(4): 51-59.
33. Ahmad, H. R., et al. (2018). "Information Technology Role in Determining Communication Style Prevalent Among Al-Azhar University Administrative Staff." *International Journal of Information Technology and Electrical Engineering* 7(4): 21-43.
34. Ahmed, A. A., et al. (2018). "The Impact of Information Technology Used on the Nature of Administrators Work at Al-Azhar University in Gaza." *International Journal of Academic Information Systems Research (IJAISR)* 2(6): 1-20.
35. Akkila, A. N. and S. S. Abu Naser (2017). "Teaching the right letter pronunciation in reciting the holy Quran using intelligent tutoring system." *International Journal of Advanced Research and Development* 2(1): 64-68.
36. Akkila, A. N., et al. (2019). "Survey of Intelligent Tutoring Systems up to the end of 2017." *International Journal of Academic Information Systems Research (IJAISR)* 3(4): 36-49.
37. Al Barsh, Y. I., et al. (2020). "MPG Prediction Using Artificial Neural Network." *International Journal of Academic Information Systems Research (IJAISR)* 4(11): 7-16.
38. Al Hila, A. A., et al. (2017). "Organizational Excellence in Palestinian Universities of Gaza Strip." *International Journal of Information Technology and Electrical Engineering* 6(4): 20-30.
39. Al Shobaki, M. J. and S. S. Abu Naser (2016). "Performance development and its relationship to demographic variables among users of computerized management information systems in Gaza electricity Distribution Company." *International Journal of Humanities and Social Science Research* 2(10): 21-30.
40. Al Shobaki, M. J. and S. S. Abu Naser (2016). "The reality of modern methods applied in process of performance assessments of employees in the municipalities in Gaza Strip." *International Journal of Advanced Scientific Research* 1(7): 14-23.
41. Al Shobaki, M. J. and S. S. Abu-Naser (2016). "The Dimensions Of Organizational Excellence In The Palestinian Higher Education Institutions From The Perspective Of The Students." *GLOBAL JOURNAL OF MULTIDISCIPLINARY STUDIES* 5(11): 66-100.
42. Al Shobaki, M. J. and S. S. Abu-Naser (2017). "The Requirements of Computerized Management Information Systems and Their Role in Improving the Quality of Administrative Decisions in the Palestinian Ministry of Education and Higher Education." *International Journal of Academic Pedagogical Research (IJAPR)* 6(6): 7-35.
43. Al Shobaki, M. J., et al. (2017). "Strategic and Operational Planning As Approach for Crises Management Field Study on UNRWA." *International Journal of Information Technology and Electrical Engineering* 5(6): 43-47.
44. Al Shobaki, M. J., et al. (2018). "The Role of Measuring and Evaluating Performance in Achieving Control Objectives-Case Study of Islamic University." *International Journal of Engineering and Information Systems (IJEIS)* 1(1): 106-118.
45. Al Shobaki, M. M., et al. (2017). "The Efficiency of Information Technology and its Role of e-IRM in the Palestinian Universities." *International Journal of Engineering and Information Systems (IJEIS)* 1(6): 36-55.
46. Al Shobaki, M., et al. (2018). "Performance Reality of Administrative Staff in Palestinian Universities." *International Journal of Academic Information Systems Research (IJAISR)* 2(4): 1-17.
47. Alajrami, E., et al. (2019). "Blood Donation Prediction using Artificial Neural Network." *International Journal of Academic Engineering Research (IJAE)* 3(10): 1-7.
48. Alamar, W. W., et al. (2016). "Rule Based System for Diagnosing Wireless Connection Problems Using SL5 Object." *International Journal of Information Technology and Electrical Engineering* 5(6): 26-33.
49. Alawar, M. W. and S. S. Abu Naser (2017). "CSS-Tutor: An intelligent tutoring system for CSS and HTML." *International Journal of Academic Research and Development* 2(1): 94-98.
50. Al-Bastami, B. G. and S. S. Abu Naser (2017). "Design and Development of an Intelligent Tutoring System for C# Language." *EUROPEAN ACADEMIC RESEARCH* 6(10): 8795.
51. Albattish, I. M. and S. S. Abu-Naser (2019). Modeling and controlling smart traffic light system using a rule based system. 2019 International Conference on Promising Electronic Technologies (ICPET), IEEE.
52. Aldahdooh, R. and S. S. Abu Naser (2017). "Development and Evaluation of the Oracle Intelligent Tutoring System (OITS)." *EUROPEAN ACADEMIC RESEARCH* 6(10): 8711-8721.
53. Al-Dour, A. F., et al. (2020). "Banana Classification Using Deep Learning." *International Journal of Academic Information Systems Research (IJAISR)* 3(12): 6-11.
54. Al-Habli, W. I., et al. (2017). "The Impact of the Quality of Banking Services on Improving the Marketing Performance of Banks in Gaza Governorates from the Point of View of Their Employees." *International Journal of Engineering and Information Systems (IJEIS)* 1(7): 197-217.
55. Al-Hanjori, M. M., et al. (2017). "Learning computer networks using intelligent tutoring system." *International Journal of Advanced Research and Development* 2(2): 1.
56. Al-Hila, A. A., et al. (2017). "The Impact of Applying the Dimensions of IT Governance in Improving e-training-Cause Study of the Ministry of Telecommunications and Information Technology in Gaza Governorates." *International Journal of Engineering and Information Systems (IJEIS)* 1(7): 194-219.
57. Al-Kahlout, M. M., et al. (2020). "Neural Network Approach to Predict Forest Fires using Meteorological Data." *International Journal of Academic Engineering Research (IJAE)* 4(9): 68-72.
58. Al-Masri, A., et al. (2011). "A prototype decision support system for optimizing the effectiveness of elearning in educational institutions." *International Journal of Data Mining & Knowledge Management Process (IJDKP)* 1: 1-13.
59. Almasri, A., et al. (2019). "Intelligent Tutoring Systems Survey for the Period 2000-2018." *International Journal of Academic Engineering Research (IJAE)* 3(5): 21-37.
60. Almurshidi, S. H. and S. S. Abu-Naser (2018). Expert System For Diagnosing Breast Cancer, Al-Azhar University, Gaza, Palestine.
61. Al-Nakhal, M. A. and S. S. Abu Naser (2017). "Adaptive Intelligent Tutoring System for learning Computer Theory." *EUROPEAN ACADEMIC RESEARCH* 6(10): 8770-8782.
62. Al-Qumbox, M. N. A. and S. S. Abu-Naser (2019). "Spiñach Expert System: Diseases and Symptoms." *International Journal of Academic Information Systems Research (IJAISR)* 3(3): 16-22.
63. Alshawwa, I. A., et al. (2019). "An Expert System for Coconut Diseases Diagnosis." *International Journal of Academic Engineering Research (IJAE)* 3(4): 8-13.
64. Alshawwa, I. A., et al. (2019). "An Expert System for Depression Diagnosis." *International Journal of Academic Health and Medical Research (IJAHMR)* 3(4): 20-27.
65. Al-Shawwa, M. and S. S. Abu-Naser (2019). "Knowledge Based System for Apple Problems Using CLIPS." *International Journal of Academic Engineering Research (IJAE)* 3(3): 1-11.
66. Al-Shawwa, M. and S. S. Abu-Naser (2019). "Predicting Birth Weight Using Artificial Neural Network." *International Journal of Academic Health and Medical Research (IJAHMR)* 3(1): 9-14.
67. AlZamil, J. Y. and S. S. S. Abu-Naser (2018). "A Cognitive System for Diagnosing Musa Acuminata Disorders." *International Journal of Academic Information Systems Research (IJAISR)* 2(8): 1-8.
68. Anderson, J., et al. (2005). "Adaptation of Problem Presentation and Feedback in an Intelligent Mathematics Tutor." *Information Technology Journal* 5(5): 167-207.
69. Ashgar, B. A. M. and S. S. Abu-Naser (2019). "Identifying Images of Invasive Hydrangea Using Pre-Trained Deep Convolutional Neural Networks." *International Journal of Academic Engineering Research (IJAE)* 3(3): 28-36.
70. Bakr, M. A. H. A., et al. (2020). "Breast Cancer Prediction using JNN." *International Journal of Academic Information Systems Research (IJAISR)* 4(10): 1-8.
71. Barhoom, A. M., et al. (2019). "Predicting Titanic Survivors using Artificial Neural Network." *International Journal of Academic Engineering Research (IJAE)* 3(9): 8-12.
72. Dheir, I. M., et al. (2019). "Knowledge Based System for Diabetes Diagnosis Using SL5 Object." *International Journal of Academic Pedagogical Research (IJAPR)* 3(4): 1-10.
73. El Kahlout, M. I. and S. S. Abu-Naser (2019). "An Expert System for Citrus Diseases Diagnosis." *International Journal of Academic Engineering Research (IJAE)* 3(4): 1-7.
74. El Talla, S. A., et al. (2018). "The Nature of the Organizational Structure in the Palestinian Governmental Universities-Al-Aqsa University as a Model." *International Journal of Academic Multidisciplinary Research (IJAMR)* 2(5): 15-31.
75. El-Mashharawi, H. Q. and S. S. Abu-Naser (2019). "An Expert System for Sesame Diseases Diagnosis Using CLIPS." *International Journal of Academic Engineering Research (IJAE)* 3(4): 22-29.
76. El-Mashharawi, H. Q., et al. (2019). "An Expert System for Arthritis Diseases Diagnosis Using SL5 Object." *International Journal of Academic Health and Medical Research (IJAHMR)* 3(4): 28-35.
77. Etanjjar, A. E. A. and S. S. Abu Naser (2017). "DES-Tutor: An Intelligent Tutoring System for Teaching DES Information Security Algorithm." *International Journal of Advanced Research and Development* 2(1): 69-73.
78. Elsharif, A. A., et al. (2020). "Potato Classification Using Deep Learning." *International Journal of Academic Pedagogical Research (IJAPR)* 3(12): 1-8.
79. Elzably, A., et al. (2015). "Predicting Software Analysis Process Risks Using Linear Stepwise Discriminant Analysis: Statistical Methods." *Int. J. Adv. Inf. Sci. Technol.* 38(38): 108-115.
80. FarajAllah, A. M., et al. (2018). "The Impact of the Leadership Standard in International Quality Models on Improving University Performance through the Intermediate Role of the Strategy Standard." *International Journal of Engineering and Information Systems (IJEIS)* 2(9): 21-32.
81. Hamed, M. A. and S. S. Abu Naser (2017). "An intelligent tutoring system for teaching the 7 characteristics for living things." *International Journal of Advanced Research and Development* 2(1): 31-45.
82. Harz, H. H., et al. (2020). "Artificial Neural Network for Predicting Diabetes Using JNN." *International Journal of Academic Engineering Research (IJAE)* 4(10): 14-22.
83. Jamal, M. N. and S. S. Abu-Naser (2018). "Predicting MPG for Automobile Using Artificial Neural Network Analysis." *International Journal of Academic Information Systems Research (IJAISR)* 2(10): 5-21.
84. Kashkash, K., et al. (2005). "Expert system methodologies and applications-a decade review from 1995 to 2004." *International Journal of Artificial Intelligence* 1(2): 9-26.
85. Khalil, A. J., et al. (2019). "Apple Trees Knowledge Based System." *International Journal of Academic Engineering Research (IJAE)* 3(9): 1-7.
86. Madi, S. A., et al. (2018). "The dominant pattern of leadership and Its Relation to the Extent of Participation of Administrative Staff in Decision-Making in Palestinian Universities." *International Journal of Academic Management Science Research (IJAMSR)* 2(7): 20-43.
87. Mahdi, A. O., et al. (2016). "An intelligent tutoring system for teaching advanced topics in information security." *World Wide Journal of Multidisciplinary Research and Development* 2(12): 1-9.
88. Marouf, A. and S. S. Abu-Naser (2018). "Predicting Antibiotic Susceptibility Using Artificial Neural Network." *International Journal of Academic Pedagogical Research (IJAPR)* 2(10): 1-5.
89. Metteq, A. S. A., et al. (2019). "Expert System for the Diagnosis of Seventh Nerve Inflammation (Bell's palsy) Disease." *International Journal of Academic Information Systems Research (IJAISR)* 3(4): 27-35.
90. Nasser, I. M. and S. S. Abu-Naser (2019). "Artificial Neural Network for Predicting Animals Category." *International Journal of Academic and Applied Research (IJAR)* 3(2): 18-24.
91. Nasser, I. M. and S. S. Abu-Naser (2019). "Predicting Tumor Category Using Artificial Neural Networks." *International Journal of Academic Health and Medical Research (IJAHMR)* 3(2): 1-7.
92. Qwaidar, S. R., et al. (2020). "Artificial Neural Network Prediction of the Academic Warning of Students in the Faculty of Engineering and Information Technology in Al-Azhar University-Gaza." *International Journal of Academic Information Systems Research (IJAISR)* 4(8): 16-22.
93. Salama, A. A., et al. (2017). "The Relationship between Performance Standards and Achieving the Objectives of Supervision at the Islamic University in Gaza." *International Journal of Engineering and Information Systems (IJEIS)* 1(10): 89-101.
94. Salama, A. A., et al. (2018). "The Role of Administrative Procedures and Regulations in Enhancing the Performance of The Educational Institutions-The Islamic University in Gaza is a Model." *International Journal of Academic Multidisciplinary Research (IJAMR)* 2(2): 14-27.
95. Salman, F. M. and S. S. Abu-Naser (2020). "Expert System for COVID-19 Diagnosis." *International Journal of Academic Information Systems Research (IJAISR)* 4(3): 1-13.
96. Shamia, M. J., et al. (2018). "Using the Asian Knowledge Model "APO" as a Determinant for Performance Excellence in Universities-Empirical Study at Al-Azhar University-Gaza." *International Journal of Information Technology and Electrical Engineering* 7(1): 1-19.
97. Sultan, Y. S. A., et al. (2018). "Effect of the Dominant Pattern of Leadership on the Nature of the Work of Administrative Staff at Al-Aqsa University." *International Journal of Academic Information Systems Research (IJAISR)* 2(7): 8-29.
98. Sultan, Y. S. A., et al. (2018). "The Style of Leadership and Its Role in Determining the Pattern of Administrative Communication in Universities-Islamic University of Gaza as a Model." *International Journal of Academic Management Science Research (IJAMSR)* 2(6): 26-42.
99. Zaqout, I., et al. (2018). "Information Technology used and its Impact on the Participation of Administrative Staff in Decision-Making in Palestinian Universities." *International Journal of Academic Multidisciplinary Research (IJAMR)* 2(8): 7-26.