

# Development of Effective ESG systems in Higher Educations

G. Bala Krishna<sup>1</sup>, K. Lasyasri<sup>2</sup>, G. Uttam Reddy<sup>3</sup>, C. Prabhas Goud<sup>4</sup>

*Associate Professor<sup>1</sup>, Department of Computer Science and Engineering, Anurag University, Telangana, India*

*Student<sup>2,3,4</sup>, Department of Computer Science and Engineering, Anurag University, Telangana, India.*

**Abstract.** Given the great significance of institutions in the journey towards sustainability, most of them lack the ability to measure and improve their ESG activities. Based on this argument, this work presents the development of a web-based application called ESGConnect, intended to assist institutions in the evaluation process pertaining to their sustainability practices through an interactive structured submission and feedback mechanism. In ESGConnect, institutions provide ESG-related documents, which administrators verify and score with recommendations on how to enhance the documents based on the Environmental, Social, and Governance criteria. User-specific dashboards are present on the tool: administrators monitor submissions, whereas users see scores and comments associated with the submissions. In addition to these items, ESGConnect also supports collaboration because students and various stakeholders are allowed to have a dedicated online community for discussion and sharing information on sustainability practices. The architecture of the platform relies on Java Servlets, JSP, and database integration for easy handling of user management and data. Preliminary testing does indeed suggest that ESGConnect might be able to facilitate better communications and actionable insights for institutions interested in improving their sustainability efforts. Expansion of the platform features and improvement in scalability to service a much larger number of educational institutions are part of the future work.

**Keywords.** Environmental, Social, Governance (ESG), Sustainability Assessment, Feedback Mechanisms.

## 1 INTRODUCTION

Sustainability has become the concern of international importance for the institutions today and is essential for mitigation of environmental degradation, enhancement of social well-being, and strengthening of governance. The ESG framework is an overall structure that helps evaluate and manage such sustainability efforts. Educational institutions play a key role as influencers of the future, making it not only unique in their internal sustainable practices but also shaping a broader influential society. Even though ESG aspects are increasingly taking on importance in the educational area, there still exist massive challenges related to self-evaluation of sustainability practices among educational institutions because of the lack of standardized tools and fragmented feedback mechanisms as well as inadequate collaboration among the stakeholders.

Probably, the most identified key challenge is that there exists no unified platform at the institutional level through which it can document, assess and improve its ESG-related activities. The ESG evaluations carried out at the moment in various educational institutions are sporadic; no structured methodologies are put in place through which such institutions receive feedback or guidance on their sustainability performances. There is limited opportunity for the institutions to hold meaningful dialogues with external stakeholders or learn from their peer-level institutions. This, in turn, leads to many institutions not making fact-and-statistics-driven decisions that improve their ESG outcomes.

This paper proposes ESGConnect, a web application that grapple over the aforementioned issues by providing a central mechanism for submitting ESG-related papers submitted on a potential institution for administrative review, obtaining detailed feedback from the administrators about the respective institutional performance and rating on the ESG performance. The ESGConnect there enables a ceaseless review loop wherein the institutions are provided actionable insights so that their sustainability efforts can be improved. Besides, it encourages collaboration by offering two kinds of communities: a student community where peers can discuss sustainability and stakeholder community with industry experts, administrators, as well as faculty to share knowledge and make decisions on ESG issues.

Development and Features ESGConnect will be discussed in this paper, with its potential effects on sustainability practices in higher education evaluated and future enhancements explored.

## 2 LITERATURE SURVEY

ESG reporting has become quite popular among corporate, government, and educational organizations. Several studies have been conducted to understand how measurements of ESG are impacting the sustainability drive. For instance, Smith and Taylor [1] were of the view that adoption of ESG frameworks in corporate governance needs more emphasis on standardization and reporting level transparency to improve sustainable practices. Johnson [2] also indicated the growing role of ESG compliance in education, particularly in developing social responsibility and environmental stewardship in students and staff members. However, most of these efforts are fragmented, and there is very few interaction and feedback between institutions, thereby minimizing the effectiveness of sustainability initiatives in institutions.

A number of tools and websites have emerged to facilitate sustainability assessment in higher institutions of learning. For example, STARS is one of the most utilized frameworks due to the fact that it has availed a platform whereby colleges and universities can clearly depict their sustainability performance using self-reporting [3]. Even though White et al. [3] reported that effectiveness in quantifying sustainability efforts in the framework was noted, they pointed out that its focus on self-reporting does not offer complete mechanisms of providing feedback or peer-to-peer engagement. Other platforms, like GreenMetric [4], offer rankings in line with sustainability indicators, but these also do not have a process by which institutions receive specific feedback or the possibility for meaningful dialogue with third-party stakeholders.

Currently, advances in web-based technologies also make it possible for institutions to automate and streamline the processes associated with ESG reporting and feedback. Lee and Kumar [5] discussed how platforms such as the Carbon Disclosure Research provide an excellent basis for an organization to document and enhance its efforts for sustainability through standardized metrics. On the other hand, a performance review of GRESB providing solutions in sustainability reporting was reviewed by Park et al. [6]. Most of these platforms, however, cater to corporate or governmental organizations, and very few are developed specifically with the needs of higher education institutions in mind. Besides, the point is that such a system usually concentrates on quantitative reporting and does not provide value for the institutional importance of building a social community where institutions can have best practices and collaborate toward ESG improvements.

An integrated ESG management system in higher education is needed to serve as a medium encouraging both reporting and feedback but still creating an environment of collaboration. Chaudhary and Patel [7] have specified the limitations of the existing tools that are while useful are not providing comprehensive solutions to the problems arising from the implementation of ESG practices in education institutions. The gap in literature and technology inspired the creation of ESGConnect, an online platform allowing institutions to submit their ESG-related documents and track actionable feedback, ratings, and engagement within a community of stakeholders and others interested in the discussion. ESGConnect thus fills this vacuum by offering a holistic solution especially tailored to the needs of higher education, with the aim of decisively improving decision-making capabilities for the guarantee of sustained improvement in sustainability.

<b>Authors</b>	<b>Title</b>	<b>Key Findings</b>	<b>Limitations</b>
Smith and Taylor	Adoption of ESG frameworks in corporate governance	Emphasizes the need for standardization and transparency in ESG reporting to improve sustainable practices	Fragmented efforts, lack of interaction and feedback between institutions

Johnson	Growing role of ESG compliance in education	Highlights the importance of ESG in developing social responsibility and environmental stewardship	Fragmented efforts, minimal interaction and feedback between institutions
White et al.	Effectiveness of STARS framework in quantifying sustainability efforts	STARS provides a platform for self-reporting sustainability performance	Focus on self-reporting, lacks mechanisms for feedback or peer-to-peer engagement
Lee and Kumar	Role of Carbon Disclosure Research in documenting sustainability efforts	Provides standardized metrics for documenting and enhancing sustainability efforts	Primarily caters to corporate or governmental organizations, not tailored for higher education needs
Park et al.	Performance review of GRESB in sustainability reporting	Reviews solutions in sustainability reporting provided by GRESB	Focuses on corporate or governmental organizations, lacks emphasis on higher education institutions
Chaudhary and Patel	Limitations of existing ESG tools in education institutions	Identifies gaps in existing tools and proposes the need for an integrated ESG management system	Existing tools do not provide comprehensive solutions for ESG practices in education institutions

### 2.1 Summary:

This literature survey indicates a growing role of ESG reporting for corporate, governmental, and educational sectors. The research study found that although compliance with ESG and the frameworks led to better sustainability, institutional collaboration and feedback mechanisms still acted as a strength to them. To be mentioned are sustainability assessment tools for higher education, such as STARS and GreenMetric, which are self-reporting tools that lack detail or mechanisms for peer engagement or feedback. Others exist, such as the Carbon Disclosure Research and GRESB, suited more for corporate-based reporting but do not directly affect the educational institutions, especially their importance in the value and formation of collaborative social communities.

The gap in the existing ESG management systems was what inspired the establishment of ESGConnect as it sought to cover this gap within a web-based platform for connecting institutions. Institutions are encouraged towards both ESG reporting and providing feedback; thus, they generate a high level of collaboration. ESGConnect is a holistic solution for higher education that creates better decision-making opportunities and fosters continuous improvement in sustainability based on actionable community feedback.

### **3 METHODOLOGY:**

The development of ESGConnect was done in a structured manner to ensure that this web-based platform for Environmental, Social, and Governance reporting and feedback within higher education will exactly meet the needs of educational institutions. The methodology comprises several steps, which are as follows:

#### **3.1 Requirements Gathering and Analysis**

The research began with a research study about the key needs of educational institutions regarding ESG reporting and feedback mechanisms. This included:

##### *1. Stakeholder Analysis*

Reaching out to the universities, administrators, and sustainability experts on their needs concerning ESG reporting, feedback, and further collaboration.

##### *2. Literature Review*

There is an examination of the existing tools, which are used to identify gaps and shortcomings in current sustainability assessment platforms for higher learning institutions.

##### *3. Functional Requirements*

Documentation of important functionalities related to document submission, ESG ratings provision, feedback provision, and social/stakeholder community engagement.

##### *4. Non-functional Requirements*

Performance, security requirements, and usability factors for the platform.

#### **3.2 System Design**

Based on the gathered requirements, a modular system architecture has been designed to support several platform components:

##### *1. User Role and Authentication*

Construction of role-based access control for all users, including administrators as well as representatives of educational institutions. Administration ratings and giving comments on document submission, and users (colleges) submit ESG-related documents and view ratings.

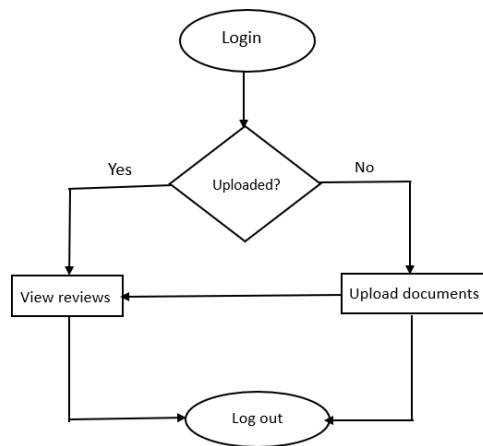
##### *2. Database Design*

Designing the structure of a database to store information such as college name, uploaded document, ESG ratings and feedback, with user roles and timestamps for the uploaded data in question.

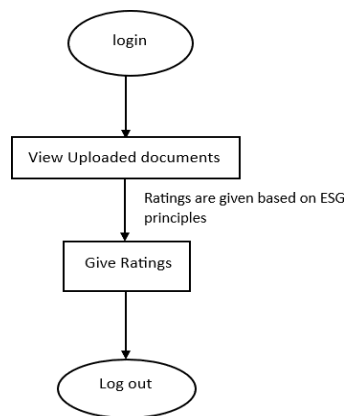
##### *3. User Interface Design*

A user-friendly interface design for the users and administrators. The user interface helps to upload the document, and the administrator interface helps to view the feedback and rating module.

#### 4. User flow diagram



#### 5. Admin flow diagram



### 3.3 Platform Development

The system was developed in an iterative manner, using the following components:

#### 1. Frontend Development

This would build web pages using HTML, CSS, and JavaScript that provide an interactive, responsive interface. The key pages include upload.jsp for document uploads, adminDashboard.jsp for the administrator to manage feedback, and collegeDashboard.jsp that enables users to view ESG ratings.

#### 2. Backend Development

Implementing the server-side logic using Java Servlets and JSPs. This layer maintains business logic related to document submission, ESG rating calculation, and role-based redirection to appropriate dashboards.

#### 3. Database Integration

Connect to the database, say MySQL, to store uploaded documents, ESG ratings, and feedback. Optimized queries have been devised to fetch data based on college names rather than unique IDs as the user wishes.

### **3.4 Testing and Validations**

I used a comprehensive test on the server for proper working:

#### *1. Unit Testing*

Module functions like uploading documents and submitting feedback were tested in their individual modules.

#### *2. Integration Testing*

End-to-end testing of the entire system, ensuring the perfect interaction between frontend, backend, and database constituents.

#### *3. User Acceptance Testing*

Different stakeholders gave their views on whether the delivered system meets their needed functionality and usability expectations.

### **3.5 Deployment and Feedback**

Once it had undergone successful testing, the platform was rolled live:

#### *1. Hosting by a Web Server*

Deployment on the platform is hosted on a web server with access protection for administrators and educational institutions.

#### *2. Continuous Monitoring*

Installing monitoring tools for tracking system performance, document submission rates, and activity among users.

#### *3. Feedback Loop*

Continuous feedback from users as well as stakeholders to add new features and resolve bugs.

### **3.6 Continuous Improvement**

After deployment, the system enters a continuous improvement cycle:

#### *1. User Feedback Integration*

Update the platform based on user feedback, such as improvement of the UI or betterment of the features in social communities.

#### *2. Feature Addition*

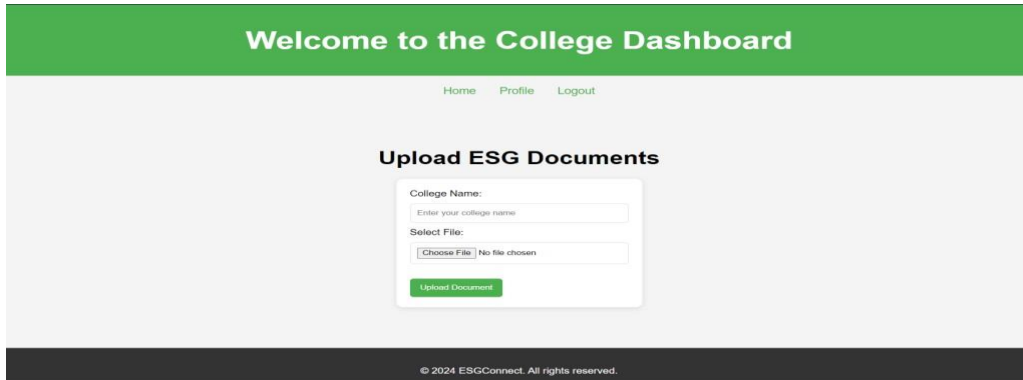
More features like automated computation of the ESG score, peer-to-peer interaction, and advanced reporting functionalities.

### 3. Scalability

The system must scale to accommodate numerous growing institutions and stakeholders without losing performance.

This approach was used in developing and deploying ESGConnect, which addresses the unique needs of higher education institutions for ESG reporting while promoting collaboration through actionable feedback and a social community for improvement in sustainability.

## 4 RESULT



The main section of the page is dedicated to uploading Environmental, Social, and Governance (ESG) documents. It includes:

#### 1. College Name Input Field

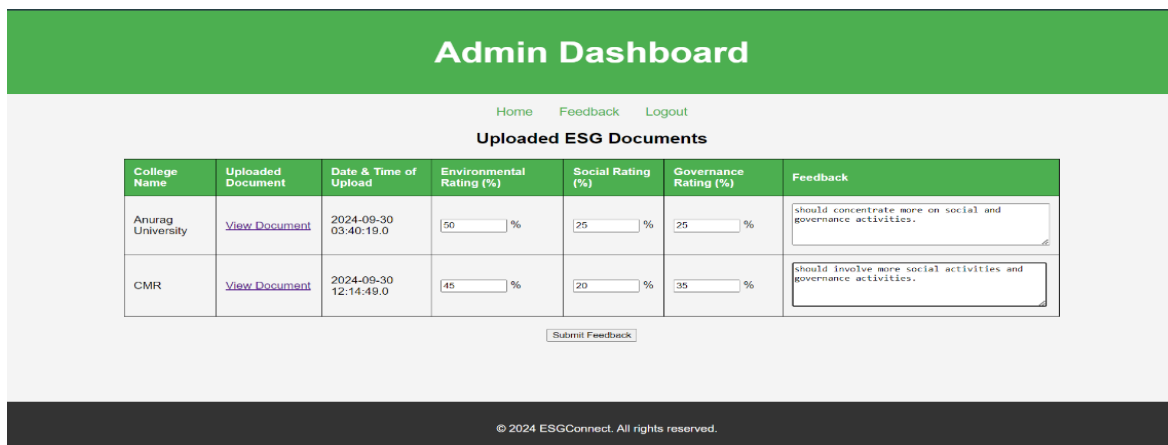
A text box labelled "College Name," prompting users to enter the name of their college.

#### 2. File Selection Button

A section for selecting the file to upload, with a button labelled "Choose File." Currently, it indicates "No file chosen," suggesting that the user has not yet selected a file.

#### 3. Upload Document Button

A button labelled "Upload Document," which users would click to submit their selected file along with the college name in which the college name and uploaded files will be stored in the database.



The main section of the dashboard contains a table that lists the details of the uploaded ESG documents. The columns in the table include:

1. *College Name*

Displays the names of the colleges that have submitted documents.

2. *Uploaded Document*

Each entry has a "View Document" link, allowing the admin to access the respective document submitted by the college.

3. *Date & Time of Upload*

Shows the timestamp for when each document was uploaded

4. *Environmental Rating (%)*

Displays the percentage score assigned to the college's environmental practices.

5. *Social Rating (%)*

Represents the percentage score related to the college's social initiatives.

6. *Governance Rating (%)*

Indicates the percentage score pertaining to governance practices within the institution.

7. *Feedback*

A text area where the admin can provide specific feedback regarding the submitted documents and the associated ratings.

Feedback Submission: At the bottom of the table, there is a "Submit Feedback" button, enabling the admin to finalize and send any feedback provided in the respective text areas.

College Details					
College Name	Uploaded Document	E Rating	S Rating	G Rating	Feedback
Anurag University	<a href="#">View Document</a>	50	25	25	should concentrate more on social and governance activities.
CMR	<a href="#">View Document</a>	45	20	35	should involve more social activities and governance activities.

The College Details of the ESG Connect platform gives detailed college information regarding the performance of the colleges concerning ESG. A table is also provided showing the name of each college; a link is attached to view all the documents uploaded by each of the colleges.

Percentages of ratings for Environmental (E Rating), Social (S Rating), and Governance (G Rating) are given to make immediate comparisons possible. In addition, it provides feedback for each college, pointing out areas of weaknesses, such as the fact that Anurag University needs more social and governance activities, and



CMR is recommended to increase its social efforts. This format facilitates assessing and strengthening sustainability practices across campuses.

## Details for Anurag University

Uploaded Document	Rating (Environmental)	Rating (Social)	Rating (Governance)	Feedback
<a href="#">View Document</a>	50	25	25	should concentrate more on social and governance activities.

The Details for Anurag University breaks down the details related to the particular ESG of the institution. It is shown that Anurag University has uploaded an ESG document, and it can be accessed through this link "View Document."

The ratings are given based on the documents. In addition, the reviews are given which suggests any changes or improvements that the university is needed to work more toward developing its ESG activities. With such detailed analysis, there comes a focused analysis of the university's sustainability practices. It shows the same for all the colleges which have uploaded the documents.

## 5 FUTURE ENHANCEMENT OF ESGCONNECT PLATFORM

The ESGConnect platform can be improved in several ways to make it more effective and user-friendly:

### 1. *Improved Feedback System*

Future updates can include providing more customized feedback options, such as specific action plans and reminders, to enable better monitoring and tracking on the part of institutions. Automated suggestions by AI could also be helpful in targeting areas for improvement.

### 2. *International ESG Standards Alignment*

Institutions could align their efforts easily with global sustainability practices by interlinking the platform with recognized international ESG standards such as GRI or SASB; this would make their comparisons meaningful.

### 3. *Improved Data Visualization*

The presentation of ESG performance through the addition of charts, graphs, and dashboards will make the data very understandable for the users. Moreover, it is possible to export detailed reports into PDF or Excel format for sharing with the stakeholders.

### 4. *Cooperation and Community Involvement*

There could be a forum for the exchange of ideas and best practices among institutions, with a ranking system to encourage healthy competition and improvement in ESG performance.

### 5. *Automated Data Tracking*

Automated data submission and tracking through tools such as sensors or real-time data collection could reduce manual work and ensure data is available when needed.

## 6. Mobile App Development

Developing an ESGConnect mobile application would enable users to access the platform easily, upload necessary documents, and receive valuable feedback on the go, thus improving accessibility and engagement.

These enhancements would make ESGConnect more efficient, scalable, and useful for educational institutions.

## REFERENCES

1. Murthy, G. V. K., Sivanagaraju, S., Satyanarayana, S., & Rao, B. H. (2012). Reliability improvement of radial distribution system with distributed generation. *International Journal of Engineering Science and Technology (IJEST)*, 4(09), 4003-4011.
2. Gowda, B. M. V., Murthy, G. V. K., Upadhye, A. S., & Raghavan, R. (1996). Serotypes of *Escherichia coli* from pathological conditions in poultry and their antibiogram.
3. Balasubbareddy, M., Murthy, G. V. K., & Kumar, K. S. (2021). Performance evaluation of different structures of power system stabilizers. *International Journal of Electrical and Computer Engineering (IJECE)*, 11(1), 114-123.
4. Murthy, G. V. K., & Sivanagaraju, S. (2012). S. Satyana rayana, B. Hanumantha Rao," Voltage stability index of radial distribution networks with distributed generation,". *Int. J. Electr. Eng*, 5(6), 791-803.
5. Anuja, P. S., Kiran, V. U., Kalavathi, C., Murthy, G. N., & Kumari, G. S. (2015). Design of elliptical patch antenna with single & double U-slot for wireless applications: a comparative approach. *International Journal of Computer Science and Network Security (IJCSNS)*, 15(2), 60.
6. Murthy, G. V. K., Sivanagaraju, S., Satyanarayana, S., & Rao, B. H. (2015). Voltage stability enhancement of distribution system using network reconfiguration in the presence of DG. *Distributed Generation & Alternative Energy Journal*, 30(4), 37-54.
7. Reddy, C. N. K., & Murthy, G. V. (2012). Evaluation of Behavioral Security in Cloud Computing. *International Journal of Computer Science and Information Technologies*, 3(2), 3328-3333.
8. Madhavi, M., & Murthy, G. V. (2020). Role of certifications in improving the quality of Education in Outcome Based Education. *Journal of Engineering Education Transformations*, 33(Special Issue).
9. Varaprasad Rao, M., Srujan Raju, K., Vishnu Murthy, G., & Kavitha Rani, B. (2020). Configure and management of internet of things. In *Data Engineering and Communication Technology: Proceedings of 3rd ICDECT-2K19* (pp. 163-172). Springer Singapore.
10. Murthy, G. V. K., Suresh, C. H. V., Sowjankumar, K., & Hanumantharao, B. (2019). Impact of distributed generation on unbalanced radial distribution system. *International Journal of Scientific and Technology Research*, 8(9), 539-542.
11. Baskar, M., Rajagopal, R. D., BVVS, P., Babu, J. C., Bartáková, G. P., & Arulananth, T. S. (2023). Multi-region minutiae depth value-based efficient forged finger print analysis. *Plos one*, 18(11), e0293249.
12. Mukiri, R. R., & Prasad, D. B. (2019, September). Developing Secure Storage of cloud with IoT Gateway. In *Proceedings of International Conference on Advancements in Computing & Management (ICACM)*.
13. Venkatesh, C., Prasad, B. V. V. S., Khan, M., Babu, J. C., & Dasu, M. V. (2024). An automatic diagnostic model for the detection and classification of cardiovascular diseases based on swarm intelligence technique. *Heliyon*, 10(3).
14. Ramesh, M., Mandapati, S., Prasad, B. S., & Kumar, B. S. (2021, December). Machine learning based cardiac magnetic resonance imaging (cmri) for cardiac disease detection. In *2021 Second International Conference on Smart Technologies in Computing, Electrical and Electronics (ICSTCEE)* (pp. 1-5). IEEE.
15. Kumar, B. S., Prasad, B. S., & Vyas, S. (2020). Combining the OGA with IDS to improve the detection rate. *Materials Today: Proceedings*.

16. Siva Prasad, B. V. V., Mandapati, S., Kumar Ramasamy, L., Boddu, R., Reddy, P., & Suresh Kumar, B. (2023). Ensemble-based cryptography for soldiers' health monitoring using mobile ad hoc networks. *Automatika: časopis za automatiku, mjerenje, elektroniku, računarstvo i komunikacije*, 64(3), 658-671.
17. Siva Prasad, B. V. V., Sucharitha, G., Venkatesan, K. G. S., Patnala, T. R., Murari, T., & Karanam, S. R. (2022). Optimisation of the execution time using hadoop-based parallel machine learning on computing clusters. In *Computer Networks, Big Data and IoT: Proceedings of ICCBI 2021* (pp. 233-244). Singapore: Springer Nature Singapore.
18. Prasad, B. V., & Ali, S. S. (2017). Software-defined networking based secure routing in mobile ad hoc network. *International Journal of Engineering & Technology*, 7(1.2), 229.
19. Elechi, P., & Onu, K. E. (2022). Unmanned Aerial Vehicle Cellular Communication Operating in Non-terrestrial Networks. In *Unmanned Aerial Vehicle Cellular Communications* (pp. 225-251). Cham: Springer International Publishing.
20. Prasad, B. V. V. S., Mandapati, S., Haritha, B., & Begum, M. J. (2020, August). Enhanced Security for the authentication of Digital Signature from the key generated by the CSTRNG method. In *2020 Third International Conference on Smart Systems and Inventive Technology (ICSSIT)* (pp. 1088-1093). IEEE.
21. Balram, G., Anitha, S., & Deshmukh, A. (2020, December). Utilization of renewable energy sources in generation and distribution optimization. In *IOP Conference Series: Materials Science and Engineering* (Vol. 981, No. 4, p. 042054). IOP Publishing.
22. Hnamte, V., & Balram, G. (2022). Implementation of Naive Bayes Classifier for Reducing DDoS Attacks in IoT Networks. *Journal of Algebraic Statistics*, 13(2), 2749-2757.
23. Balram, G., Poornachandrarao, N., Ganesh, D., Nagesh, B., Basi, R. A., & Kumar, M. S. (2024, September). Application of Machine Learning Techniques for Heavy Rainfall Prediction using Satellite Data. In *2024 5th International Conference on Smart Electronics and Communication (ICOSEC)* (pp. 1081-1087). IEEE.
24. Subrahmanyam, V., Sagar, M., Balram, G., Ramana, J. V., Tejaswi, S., & Mohammad, H. P. (2024, May). An Efficient Reliable Data Communication For Unmanned Air Vehicles (UAV) Enabled Industry Internet of Things (IIoT). In *2024 3rd International Conference on Artificial Intelligence For Internet of Things (AIIoT)* (pp. 1-4). IEEE.
25. KATIKA, R., & BALRAM, G. (2013). Video Multicasting Framework for Extended Wireless Mesh Networks Environment. *pp-427-434, IJSRET*, 2(7).
26. Prasad, P. S., & Rao, S. K. M. (2017). HIASA: Hybrid improved artificial bee colony and simulated annealing based attack detection algorithm in mobile ad-hoc networks (MANETs). *Bonfring International Journal of Industrial Engineering and Management Science*, 7(2), 01-12.
27. Prasad, P. S., & Rao, S. K. M. (2017). A Survey on Performance Analysis of Manets Under Security Attacks. *network*, 6(7).
28. Reddy, P. R. S., & Ravindranath, K. (2024). Enhancing Secure and Reliable Data Transfer through Robust Integrity. *Journal of Electrical Systems*, 20(1s), 900-910.
29. REDDY, P. R. S., & RAVINDRANATH, K. (2022). A HYBRID VERIFIED RE-ENCRYPTION INVOLVED PROXY SERVER TO ORGANIZE THE GROUP DYNAMICS: SHARING AND REVOCATION. *Journal of Theoretical and Applied Information Technology*, 100(13).
30. Reddy, P. R. S., Ram, V. S. S., Greshma, V., & Kumar, K. S. Prediction of Heart Healthiness.
31. Reddy, P. R. S., Reddy, A. M., & Ujwala, B. IDENTITY PRESERVING IN DYNAMIC GROUPS FOR DATA SHARING AND AUDITING IN CLOUD.
32. Kovoov, M., Durairaj, M., Karyakarte, M. S., Hussain, M. Z., Ashraf, M., & Maguluri, L. P. (2024). Sensor-enhanced wearables and automated analytics for injury prevention in sports. *Measurement: Sensors*, 32, 101054.
33. Rao, N. R., Kovoov, M., Kishor Kumar, G. N., & Parameswari, D. V. L. (2023). Security and privacy in smart farming: challenges and opportunities. *International Journal on Recent and Innovation Trends in Computing and Communication*, 11(7 S).
34. Madhuri, K. (2023). Security Threats and Detection Mechanisms in Machine Learning. *Handbook of Artificial Intelligence*, 255.
35. Madhuri, K. (2022). A New Level Intrusion Detection System for Node Level Drop Attacks in Wireless Sensor Network. *Journal of Algebraic Statistics*, 13(1), 159-168.
36. Yakoob, S., Krishna Reddy, V., & Dastagiraiiah, C. (2017). Multi User Authentication in Reliable Data

- Storage in Cloud. In *Computer Communication, Networking and Internet Security: Proceedings of IC3T 2016* (pp. 531-539). Springer Singapore.
37. DASTAGIRAIH, D. (2024). A SYSTEM FOR ANALYSING CALL DROP DYNAMICS IN THE TELECOM INDUSTRY USING MACHINE LEARNING AND FEATURE SELECTION. *Journal of Theoretical and Applied Information Technology*, 102(22).
  38. Sukhavasi, V., Kulkarni, S., Raghavendran, V., Dastagiraiyah, C., Apat, S. K., & Reddy, P. C. S. (2024). Malignancy Detection in Lung and Colon Histopathology Images by Transfer Learning with Class Selective Image Processing.
  39. Sudhakar, R. V., Dastagiraiyah, C., Pattem, S., & Bhukya, S. (2024). Multi-Objective Reinforcement Learning Based Algorithm for Dynamic Workflow Scheduling in Cloud Computing. *Indonesian Journal of Electrical Engineering and Informatics (IJEI)*, 12(3), 640-649.
  40. PushpaRani, K., Roja, G., Anusha, R., Dastagiraiyah, C., Srilatha, B., & Manjusha, B. (2024, June). Geological Information Extraction from Satellite Imagery Using Deep Learning. In *2024 15th International Conference on Computing Communication and Networking Technologies (ICCCNT)* (pp. 1-7). IEEE.
  41. Samya, B., Archana, M., Ramana, T. V., Raju, K. B., & Ramineni, K. (2024, February). Automated Student Assignment Evaluation Based on Information Retrieval and Statistical Techniques. In *Congress on Control, Robotics, and Mechatronics* (pp. 157-167). Singapore: Springer Nature Singapore.
  42. Sravan, K., Rao, L. G., Ramineni, K., Rachapalli, A., & Mohmmad, S. (2024). Analyze the Quality of Wine Based on Machine Learning Approach Check for updates. *Data Science and Applications: Proceedings of ICDSA 2023, Volume 3*, 820, 351.
  43. Chandhar, K., Ramineni, K., Ramakrishna, E., Ramana, T. V., Sandeep, A., & Kalyan, K. (2023, December). Enhancing Crop Yield Prediction in India: A Comparative Analysis of Machine Learning Models. In *2023 3rd International Conference on Smart Generation Computing, Communication and Networking (SMART GENCON)* (pp. 1-4). IEEE.
  44. Ramineni, K., Shankar, K., Shabana, Mahender, A., & Mohmmad, S. (2023, June). Detecting of Tree Cutting Sound in the Forest by Machine Learning Intelligence. In *International Conference on Power Engineering and Intelligent Systems (PEIS)* (pp. 303-314). Singapore: Springer Nature Singapore.
  45. Sekhar, P. R., & Sujatha, B. (2020, July). A literature review on feature selection using evolutionary algorithms. In *2020 7th International Conference on Smart Structures and Systems (ICSSS)* (pp. 1-8). IEEE.
  46. Sekhar, P. R., & Sujatha, B. (2023). Feature extraction and independent subset generation using genetic algorithm for improved classification. *Int. J. Intell. Syst. Appl. Eng*, 11, 503-512.
  47. Sekhar, P. R., & Goud, S. (2024). Collaborative Learning Techniques in Python Programming: A Case Study with CSE Students at Anurag University. *Journal of Engineering Education Transformations*, 38(Special Issue 1).
  48. Pesaramelli, R. S., & Sujatha, B. (2024, March). Principle correlated feature extraction using differential evolution for improved classification. In *AIP Conference Proceedings* (Vol. 2919, No. 1). AIP Publishing.
  49. Amarnadh, V., & Moparthi, N. R. (2024). Range control-based class imbalance and optimized granular elastic net regression feature selection for credit risk assessment. *Knowledge and Information Systems*, 1-30.
  50. Amarnadh, V., & Akhila, M. (2019, May). RETRACTED: Big Data Analytics in E-Commerce User Interest Patterns. In *Journal of Physics: Conference Series* (Vol. 1228, No. 1, p. 012052). IOP Publishing.
  51. Amarnadh, V., & Moparthi, N. (2023). Data Science in Banking Sector: Comprehensive Review of Advanced Learning Methods for Credit Risk Assessment. *International Journal of Computing and Digital Systems*, 14(1), 1-xx.
  52. Rao, K. R., & Amarnadh, V. QoS Support for Cross-Layer Scheduling Algorithm in Wireless Networks.
  53. Selvan, M. Arul, and S. Miruna Joe Amali. "RAINFALL DETECTION USING DEEP LEARNING TECHNIQUE." (2024).
  54. Selvan, M. Arul. "Fire Management System For Industrial Safety Applications." (2023).
  55. Selvan, M. A. (2023). A PBL REPORT FOR CONTAINMENT ZONE ALERTING APPLICATION.

56. Selvan, M. A. (2023). CONTAINMENT ZONE ALERTING APPLICATION A PROJECT BASED LEARNING REPORT.
57. Selvan, M. A. (2021). Robust Cyber Attack Detection with Support Vector Machines: Tackling Both Established and Novel Threats.
58. Selvan, M. A. (2023). INDUSTRY-SPECIFIC INTELLIGENT FIRE MANAGEMENT SYSTEM.
59. Selvan, M. Arul. "PHISHING CONTENT CLASSIFICATION USING DYNAMIC WEIGHTING AND GENETIC RANKING OPTIMIZATION ALGORITHM." (2024).
60. Selvan, M. Arul. "Innovative Approaches in Cardiovascular Disease Prediction Through Machine Learning Optimization." (2024).
61. FELIX, ARUL SELVAN M. Mr D., and XAVIER DHAS Mr S. KALAIVANAN. "Averting Eavesdrop Intrusion in Industrial Wireless Sensor Networks."
62. Raj, R. S., & Raju, G. P. (2014, December). An approach for optimization of resource management in Hadoop. In *International Conference on Computing and Communication Technologies* (pp. 1-5). IEEE.
63. Reddy, P. R. S., Bhoga, U., Reddy, A. M., & Rao, P. R. (2017). OER: Open Educational Resources for Effective Content Management and Delivery. *Journal of Engineering Education Transformations*, 30(3).
64. Reddy, A. V. B., & Ujwala, B. Answering Xml Query Using Tree Based Association Rules.
65. Reddy, P. R. S., Reddy, A. M., & Ujwala, B. IDENTITY PRESERVING IN DYNAMIC GROUPS FOR DATA SHARING AND AUDITING IN CLOUD.
66. Khadse, S. P., & Ingle, S. D. (2011, February). Hydrogeological framework and estimation of aquifer hydraulic parameters using geoelectrical data in the Bhuleshwari river basin, Amravati District, Maharashtra. In *National Conference on Geology and Mineral Resources of India, Aurangabad* (pp. 11-12).
67. Ingle, S. D. Monitoring and Modeling Approaches for Evaluating Managed Aquifer Recharge (MAR) Performance.
68. Kumar, T. V. (2024). A Comparison of SQL and NO-SQL Database Management Systems for Unstructured Data.
69. Kumar, T. V. (2024). A Comprehensive Empirical Study Determining Practitioners' Views on Docker Development Difficulties: Stack Overflow Analysis.
70. Tambi, V. K., & Singh, N. Evaluation of Web Services using Various Metrics for Mobile Environments and Multimedia Conferences based on SOAP and REST Principles.
71. Kumar, T. V. (2024). Developments and Uses of Generative Artificial Intelligence and Present Experimental Data on the Impact on Productivity Applying Artificial Intelligence that is Generative.
72. Kumar, T. V. (2024). A New Framework and Performance Assessment Method for Distributed Deep Neural NetworkBased Middleware for Cyberattack Detection in the Smart IoT Ecosystem.
73. Sharma, S., & Dutta, N. (2024). Examining ChatGPT's and Other Models' Potential to Improve the Security Environment using Generative AI for Cybersecurity.
74. Tambi, V. K., & Singh, N. Blockchain Technology and Cybersecurity Utilisation in New Smart City Applications.
75. Tambi, V. K., & Singh, N. New Smart City Applications using Blockchain Technology and Cybersecurity Utilisation.
76. Kumar, T. V. (2018). Project Risk Management System Development Based on Industry 4.0 Technology and its Practical Implications.
77. Arora, P., & Bhardwaj, S. Using Knowledge Discovery and Data Mining Techniques in Cloud Computing to Advance Security.
78. Arora, P., & Bhardwaj, S. (2021). Methods for Threat and Risk Assessment and Mitigation to Improve Security in the Automotive Sector. *Methods*, 8(2).
79. Arora, P., & Bhardwaj, S. A Thorough Examination of Privacy Issues using Self-Service Paradigms in the Cloud Computing Context.
80. Arora, P., & Bhardwaj, S. (2020). Research on Cybersecurity Issues and Solutions for Intelligent Transportation Systems.
81. Arora, P., & Bhardwaj, S. (2019). The Suitability of Different Cybersecurity Services to Stop Smart Home Attacks.
82. Arora, P., & Bhardwaj, S. (2019). Safe and Dependable Intrusion Detection Method Designs Created with Artificial Intelligence Techniques. *machine learning*, 8(7).

83. Arora, Pankit, and Sachin Bhardwaj. "A Very Effective and Safe Method for Preserving Privacy in Cloud Data Storage Settings."
84. Arora, P., & Bhardwaj, S. (2017). A Very Safe and Effective Way to Protect Privacy in Cloud Data Storage Configurations.
85. Arora, P., & Bhardwaj, S. The Applicability of Various Cybersecurity Services to Prevent Attacks on Smart Homes.
86. Arora, P., & Bhardwaj, S. Designs for Secure and Reliable Intrusion Detection Systems using Artificial Intelligence Techniques.
87. Khan, A. (2020). Formulation and Evaluation of Flurbiprofen Solid Dispersions using Novel Carriers for Enhancement of Solubility. *Asian Journal of Pharmaceutics (AJP)*, 14(03).
88. Jindal, S., Singh, M., & Chauhan, J. (2024). Effect and Optimization of Welding Parameters and Flux Baking on Weld Bead Properties and Tensile Strength in Submerged Arc Welding of HSLA 100 Steel. *Transactions of the Indian Institute of Metals*, 77(3), 747-766.
89. Chauhan, M. J. (2017). Optimization Of Parameters For Gas Metal Arc Welding Of Mild Steel Using Taguchi's.
90. Singh, S., Kumar, M., Singh, J., Meena, M. L., Dangayach, G. S., & Shukla, D. K. (2023). Investigating the Influence of ASAW Process Parameters on Chemical Composition, Mechanical Properties and Corrosion Rate of HSLA Steel Weldments. *Transactions of the Indian Institute of Metals*, 76(10), 2791-2806.
91. Monika, J. C. A REVIEW PAPER ON GAS METAL ARC WELDING (GMAW) OF MILD STEEL 1018 BY USING TAGUCHI. *Carbon*, 100, 0-14.
92. Sharma, S., & Dutta, N. A Large-Scale Empirical Study Identifying Practitioners' Perspectives on Challenges in Docker Development: Analysis using Stack Overflow.
93. Sharma, S., & Dutta, N. (2024). Examining ChatGPT's and Other Models' Potential to Improve the Security Environment using Generative AI for Cybersecurity.
94. Sharma, S., & Dutta, N. Assessment of Web Services based on SOAP and REST Principles using Different Metrics for Mobile Environment and Multimedia Conference.
95. Sharma, S., & Dutta, N. Design and Implementation of a Pattern-based J2EE Application Development Environment.
96. Sharma, S., & Dutta, N. Evaluation of Potential REST Web Service Description for Graph-based Service Discovery Focused on Hypermedia.
97. Sharma, S., & Dutta, N. A Comparative Exploration of Unstructured Data with SQL and NO-SQL Database Management Systems.
98. Sharma, S., & Dutta, N. Examination of Anomaly Process Detection Using Negative Selection Algorithm and Classification Techniques.
99. Sharma, S., & Dutta, N. Utilization of Blockchain Technology with Cybersecurity in Emerging Smart City Applications.
100. Sharma, S., & Dutta, N. Practical Implications and Development of Project Risk Management Framework based on Industry 4.0 Technologies.
101. Sharma, S., & Dutta, N. Design and Development of Project Risk Management System using Industry 4.0 Technology and Its Practical Implications.
102. Davuluri, S. K., Alvi, S. A. M., Aeri, M., Agarwal, A., Serajuddin, M., & Hasan, Z. (2023, April). A Security Model for Perceptive 5G-Powered BC IoT Associated Deep Learning. In *2023 International Conference on Inventive Computation Technologies (ICICT)* (pp. 118-125). IEEE.
103. Rathod, C. H. A. N. D. A. R., & Reddy, G. K. (2016). Experimental investigation of angular distortion and transverse shrinkage in CO<sub>2</sub> arc welding process. *International Journal of Mechanical Engineering*, 5, 21-28.
104. Rao, G. V., Reddy, G. K., Jagadish Babu, G., & Rao, V. V. S. (2012). Prediction of thermal post buckling and deduction of large amplitude vibration behavior of spring-hinged beams. *Forschung im Ingenieurwesen*, 76, 51-58.
105. Reddy, E. J., Reddy, G. K., & Rajendra, D. (2021). Design of lifting tackle for armor plate of sinter machine. *International Journal on Technical and Physical Problems of Engineering*, 13, 23-28.
106. Reddy, G. K., & Sravanthi, B. (2019). Design and analysis of a propeller blade used for marine engine. *International Journal of Scientific Research in Science, Engineering and Technology*, 6(1), 440-445.

107. Reddy, H., Reddy, G., Phanindra, G., & Kumar, K. (2018). Design and Analysis of Condenser Using 3D Modelling Software. *International Journal of Research in Engineering and Technology*, 7, 2319-1168.
108. Reddy, E. J., & Sridhar, C. N. V., Rangadu VP (2015) Knowledge Based Engineering: Notion, Approaches and Future Trends. *Am J Intell Syst*, 5, 1-17.
109. Reddy, E. J., & Rangadu, V. P. (2018). Development of knowledge based parametric CAD modeling system for spur gear: An approach. *Alexandria engineering journal*, 57(4), 3139-3149.
110. Jayakiran Reddy, E., Sridhar, C. N. V., & Pandu Rangadu, V. (2016). Research and development of knowledge based intelligent design system for bearings library construction using solidworks API. In *Intelligent Systems Technologies and Applications: Volume 2* (pp. 311-319). Springer International Publishing.
111. Reddy, E. J., Venkatachalapathi, N., & Rangadu, V. P. (2018). Development of an approach for Knowledge-Based System for CAD modelling. *Materials Today: Proceedings*, 5(5), 13375-13382.
112. Reddy, E., Kumar, S., Rollings, N., & Chandra, R. (2015). Mobile application for dengue fever monitoring and tracking via GPS: case study for fiji. *arXiv preprint arXiv:1503.00814*.
113. Parthiban, K. G., & Vijayachitra, S. (2015). Spike detection from electroencephalogram signals with aid of hybrid genetic algorithm-particle swarm optimization. *Journal of Medical Imaging and Health Informatics*, 5(5), 936-944.
114. Mathew, O. C., Dhanapal, R., Visalakshi, P., Parthiban, K. G., & Karthik, S. (2020). Distributed security model for remote healthcare (dsm-rh) services in internet of things environment. *Journal of Medical Imaging and Health Informatics*, 10(1), 185-193.
115. Parthiban, K. G., Vijayachitra, S., & Dhanapal, R. (2019). Hybrid dragonfly optimization-based artificial neural network for the recognition of epilepsy. *International Journal of Computational Intelligence Systems*, 12(2), 1261-1269.
116. Bhat, S. (2024). Building Thermal Comforts with Various HVAC Systems and Optimum Conditions.
117. Bhat, S. Automobile Cabin Pre-Conditioning Method Driven by Environmental Conditions with Multi-Satisfaction Goals.
118. Bhat, S. Thermal Comfort Models' Applicability to Automobile Cabin Environments.
119. Bhat, S. Discovering the Attractiveness of Hydrogen-Fuelled Gas Turbines in Future Energy Systems.
120. Bhat, S. Increasing the Cooling Efficiency of Data Centre Servers with Heat Pipes Based on Liquid Cooling.
121. Bhat, S. Deep Reinforcement Learning for Energy-Efficient Thermal Comfort Control in Smart Buildings.
122. Bhat, S. (2020). Enhancing Data Centre Energy Efficiency with Modelling and Optimisation of End-To-End Cooling.
123. Bhat, S. (2015). Design and Function of a Gas Turbine Range Extender for Hybrid Vehicles.
124. Bhat, S. (2015). Deep Reinforcement Learning for Energy-Saving Thermal Comfort Management in Intelligent Structures.
125. Bhat, S. (2016). Improving Data Centre Energy Efficiency with End-To-End Cooling Modelling and Optimisation.
126. Tayal, S., Upadhyay, A. K., Kumar, D., & Rahi, S. B. (Eds.). (2022). *Emerging low-power semiconductor devices: Applications for future technology nodes*. CRC Press.
127. Kumar, T. V., & Balamurugan, N. B. (2018). Analytical modeling of InSb/AlInSb heterostructure dual gate high electron mobility transistors. *AEU-International Journal of Electronics and Communications*, 94, 19-25.
128. Karthick, R., Rinoj, B., Kumar, T. V., Prabakaran, A. M., & Selvaprasanth, P. (2019). Automated Health Monitoring System for Premature Fetus. *Asian Journal of Applied Science and Technology (AJAST)(Peer Reviewed Quarterly International Journal) Volume*, 3, 17-23.
129. Venish Kumar, T., & Balamurugan, N. B. (2020). Three-dimensional analytical modeling for small-geometry AlInSb/AlSb/InSb double-gate high-electron-mobility transistors (DG-HEMTs). *Journal of Computational Electronics*, 19, 1107-1115.
130. Tejani, A. (2021). Integrating energy-efficient HVAC systems into historical buildings: Challenges and solutions for balancing preservation and modernization. *ESP Journal of Engineering &*

- Technology Advancements*, 1(1), 83-97.
131. Tejani, A., Yadav, J., Toshniwal, V., & Gajjar, H. (2022). Achieving net-zero energy buildings: The strategic role of HVAC systems in design and implementation. *ESP Journal of Engineering & Technology Advancements*, 2(1), 39-55.
  132. Govindaraj, V. (2024). The Future of Mainframe IDMS: Leveraging Artificial Intelligence for Modernization and Efficiency. *International Journal of Advanced Computer Science & Applications*, 15(11).
  133. Jayasingh, S. K., Mishra, R. K., Swain, S., & Sahoo, A. K. SENTIMENT ANALYSIS TO HANDLE COMPLEX LINGUISTIC STRUCTURES: A REVIEW ON EXISTING METHODOLOGIES.
  134. Bandi, M., Masimukku, A. K., Vemula, R., & Vallu, S. (2024). Predictive Analytics in Healthcare: Enhancing Patient Outcomes through Data-Driven Forecasting and Decision-Making. *International Numeric Journal of Machine Learning and Robots*, 8(8), 1-20.
  135. Harinath, D., Bandi, M., Patil, A., Murthy, M. R., & Raju, A. V. S. (2024). Enhanced Data Security and Privacy in IoT devices using Blockchain Technology and Quantum Cryptography. *Journal of Systems Engineering and Electronics (ISSN NO: 1671-1793)*, 34(6).
  136. Harinath, D., Patil, A., Bandi, M., Raju, A. V. S., Murthy, M. R., & Spandana, D. (2024). Smart Farming System—An Efficient technique by Predicting Agriculture Yields Based on Machine Learning. *Technische Sicherheit (Technical Security) Journal*, 24(5), 82-88.
  137. Masimukku, A. K., Bandi, M., Vallu, S., Patil, A., Vasundhara, K. L., & Murthy, M. R. (2025). Innovative Approaches in Diabetes Management: Leveraging Technology for Improved Healthcare Outcomes. *International Meridian Journal*, 7(7).
  138. Harinath, D., Patil, A., Ramadevi, G. R., Bandi, M., Murthy, M. R., & Reddy, K. S. Enhancing Routing Efficiency and Performance in Mobile Ad-Hoc Networks Using Deep Learning Techniques.
  139. Thamma, S. R. (2024). A Comprehensive Evaluation and Methodology on Enhancing Computational Efficiency through Accelerated Computing.
  140. Thamma, S. R. (2024). An Experimental Analysis of Revolutionizing Banking and Healthcare with Generative AI.
  141. Thamma, S. R. (2024). A Case Study on Transforming Legacy Databases Seamless Migration to Snowflake.
  142. Vadisetty, R. (2020). Privacy-Preserving Machine Learning Techniques for Data in Multi Cloud Environments. *Corrosion Management ISSN: 1355-5243*, 30(1), 57-74.
  143. Vadisetty, R. (2024, November). Multi Layered Cloud Technologies to achieve Interoperability in AI. In *2024 International Conference on Intelligent Computing and Emerging Communication Technologies (ICEC)* (pp. 1-5). IEEE.
  144. Vadisetty, R. (2024, November). The Effects of Cyber Security Attacks on Data Integrity in AI. In *2024 International Conference on Intelligent Computing and Emerging Communication Technologies (ICEC)* (pp. 1-6). IEEE.
  145. Vadisetty, R. (2024, November). Efficient Large-Scale Data based on Cloud Framework using Critical Influences on Financial Landscape. In *2024 International Conference on Intelligent Computing and Emerging Communication Technologies (ICEC)* (pp. 1-6). IEEE.
  146. Mahalakshmi, A., Goud, N. S., & Murthy, G. V. (2018). A survey on phishing and it's detection techniques based on support vector method (Svm) and software defined networking (sdn). *International Journal of Engineering and Advanced Technology*, 8(2), 498-503.
  147. Swapna Goud, N., & Mathur, A. (2019). A certain investigations on web security threats and phishing website detection techniques. *International Journal of Advanced Science and Technology*, 28(16), 871-879.
  148. Swapna, N. (2017). „Analysis of Machine Learning Algorithms to Protect from Phishing in Web Data Mining“. *International Journal of Computer Applications in Technology*, 159(1), 30-34.
  149. SAIPRASANNA, S., GOUD, N. S., & MURTHY, G. V. (2021). ENHANCED RECURRENT CONVOLUTIONAL NEURAL NETWORKS BASED EMAIL PHISHING DETECTION. *Elementary Education Online*, 20(5), 5970-5970.
  150. Balakrishna, G., & Nageshwara Rao, M. (2019). Study report on using IoT agriculture farm monitoring. In *Innovations in Computer Science and Engineering: Proceedings of the Sixth ICICSE*



- 2018 (pp. 483-491). Springer Singapore.
151. Balakrishna, G., & Moparthi, N. R. (2020). Study report on Indian agriculture with IoT. *International Journal of Electrical and Computer Engineering*, 10(3), 2322.
  152. Moparthi, N. R., Balakrishna, G., Chithaluru, P., Kolla, M., & Kumar, M. (2023). An improved energy-efficient cloud-optimized load-balancing for IoT frameworks. *Heliyon*, 9(11).
  153. Balakrishna, G., & Moparthi, N. R. (2019). ESBL: design and implement a cloud integrated framework for IoT load balancing. *International Journal of Computers Communications & Control*, 14(4), 459-474.
  154. Shailaja, K., & Anuradha, B. (2016, December). Effective face recognition using deep learning based linear discriminant classification. In *2016 IEEE international conference on computational intelligence and computing research (ICCIC)* (pp. 1-6). IEEE.
  155. Reddy, K. S. S., Manohara, M., Shailaja, K., Revathy, P., Kumar, T. M., & Premalatha, G. (2022). Power management using AI-based IOT systems. *Measurement: Sensors*, 24, 100551.
  156. Swetha, A., & Shailaja, K. (2020). An Effective Approach for Security Attacks Based on Machine Learning Algorithms. In *Advances in Computational Intelligence and Informatics: Proceedings of ICACII 2019* (pp. 293-299). Springer Singapore.
  157. Shailaja, K., Vaishnavi, K., Shilpa, P., Naveen, S., & Goud, C. U. Data Augmentation for Medical Image Analysis.
  158. Ahmad, S. S., Tejaswi, S., Latha, S. B., Kumari, D. S., Prasad, S. D. V., & Bethu, S. (2023, December). Deep learning based mitosis detection for breast cancer prognosis. In *AIP Conference Proceedings* (Vol. 2938, No. 1). AIP Publishing.
  159. Tejaswi, S., Sivaprashanth, J., Bala Krishna, G., Sridevi, M., & Rawat, S. S. (2023, December). Smart Dustbin Using IoT. In *International Conference on Advances in Computational Intelligence and Informatics* (pp. 257-265). Singapore: Springer Nature Singapore.